



**REGIONAL SPECIALISED METEOROLOGICAL CENTRE-TROPICAL CYCLONES, NEW DELHI**  
**TROPICAL CYCLONE ADVISORY NO. 04**

**DEMS-RSMC TROPICAL CYCLONES NEW DELHI DATED 17.11.2023**

**FROM: RSMC –TROPICAL CYCLONES, NEW DELHI**

**TO: STORM WARNING CENTRE, DHAKA (BANGLADESH)**  
**STORM WARNING CENTRE, NAYPYI TAW (MYANMAR)**  
**STORM WARNING CENTRE, BANGKOK (THAILAND)**  
**STORM WARNING CENTRE, COLOMBO (SRILANKA)**  
**STORM WARNING CENTRE, KARACHI (PAKISTAN)**  
**METEOROLOGICAL OFFICE, MALE (MALDIVES)**  
**OMAN METEOROLOGICAL DEPARTMENT, MUSCAT (THROUGH RTH JEDDAH)**  
**YEMEN METEOROLOGICAL SERVICES, REPUBLIC OF YEMEN (THROUGH RTH JEDDAH)**  
**NATIONAL CENTRE FOR METEOROLOGY, UAE (THROUGH RTH JEDDAH)**  
**PRESIDENCY OF METEOROLOGY AND ENVIRONMENT, SAUDI ARABIA (THROUGH RTH JEDDAH)**  
**IRAN METEOROLOGICAL ORGANISATION, (THROUGH RTH JEDDAH)**  
**QATAR METEOROLOGICAL DEPARTMENT (THROUGH RTH JEDDAH)**

**TROPICAL CYCLONE ADVISORY NO. 4 FOR NORTH INDIAN OCEAN (THE BAY OF BENGAL AND ARABIAN SEA) VALID FOR NEXT 120 HOURS ISSUED AT 1130 UTC OF 17.11.2023 BASED ON 0900 UTC OF 17.11.2023**

**SUB: CYCLONIC STORM “MIDHILI” (PRONOUNCED AS “MIDHILI”) IS CROSSING BANGLADESH COAST NEAR KHEPUPARA**

THE CYCLONIC STORM “MIDHILI” (PRONOUNCED AS “MIDHILI”) OVER NORTHWEST AND ADJOINING NORTHEAST BAY OF BENGAL MOVED NORTH-NORTHEASTWARDS WITH A SPEED OF 25 KMPH DURING PAST 6 HOURS AND LAY CENTERED AT 0900 UTC OF TODAY, THE 17TH NOVEMBER OVER NORTHEAST AND ADJOINING NORTHWEST BAY OF BENGAL NEAR LATITUDE 21.8°N AND LONGITUDE 90.0°E, ABOUT 30 KM SOUTH-SOUTHWEST OF KHEPUPARA (41984) AND 250 KM SOUTHWEST OF CHITTAGONG (41977).

LATEST OBSERVATIONS INDICATE THAT CYCLONIC STORM “MIDHILI” IS CROSSING BANGLADESH COAST CLOSE TO KEHPUPARA WITH WIND SPEED OF 65-75 GUSTING TO 85 KMPH. LANDFALL PROCESS WILL BE COMPLETED DURING NEXT 03 HOURS.

FORECAST TRACK AND INTENSITY ARE GIVEN BELOW:

DATE/TIME (UTC)	POSITION (LAT. °N/ LONG. °E)	MAXIMUM SUSTAINED SURFACE WIND SPEED (KMPH)	CATEGORY OF CYCLONIC DISTURBANCE
17.11.23/0900	21.8/90.0	65-75 KMPH GUSTING TO 85 KMPH	CYCLONIC STORM
17.11.23/1200	22.4/90.4	60-70 KMPH GUSTING TO 80 KMPH	CYCLONIC STORM
17.11.23/1800	23.0/90.9	50-60 KMPH GUSTING TO 70 KMPH	DEEP DEPRESSION
18.11.23/0000	23.6/91.4	35-45 KMPH GUSTING TO 55 KMPH	DEPRESSION

THE ASSOCIATED MAXIMUM SUSTAINED WIND SPEED IS 40 KNOTS GUSTING TO 50 KNOTS. THE WINDS ARE RELATIVELY STRONGER IN NORTHEAST SECTOR. THE ESTIMATED CENTRAL PRESSURE IS 1000 HPA. HIGH SEA CONDITION IS PREVAILING OVER NORTH BAY OF BENGAL AND ALONG & OFF BANGLADESH COAST AND ADJOINING MYANMAR COAST AND LIKELY TO CONTINUE TILL 1800 UTC OF 17<sup>TH</sup> NOVEMBER. VERY ROUGH TO ROUGH SEA CONDITION IS LIKELY OVER ALONG & OFF WEST BENGAL BAY OF BENGAL TILL 18<sup>TH</sup> NOVEMBER MORNING.

INTENSITY OF THE SYSTEM IS CHARACTERISED AS T2.5. CLOUDS ASSOCIATED WITH THE CYCLONIC STORM ARE ORGANISED IN SHEAR PATTERN. BROKEN LOW & MEDIUM CLOUDS WITH EMBEDDED INTENSE TO VERY INTENSE CONVECTION LAY OVER NORTHEAST BAY OF BENGAL, SOUTHWEST & EAST BANGLADESH, TRIPURA, AND NORTH MYANMAR. MINIMUM CLOUD TOP TEMPERATURE IS -80<sup>0</sup>C. MODERATE TO INTENSE CONVECTION LAY OVER REST OF NORTHEAST STATES AND NORTH BANGLADESH. LATEST IMAGERY INDICATES THE SPIRAL BANDS OVER COASTAL BANGLADESH AND MIZORAM & TRIPURA WHICH MAY LEAD TO INTENSE PRECIPITATION OVER BANGLADESH, TRIPURA AND MIZORAM.

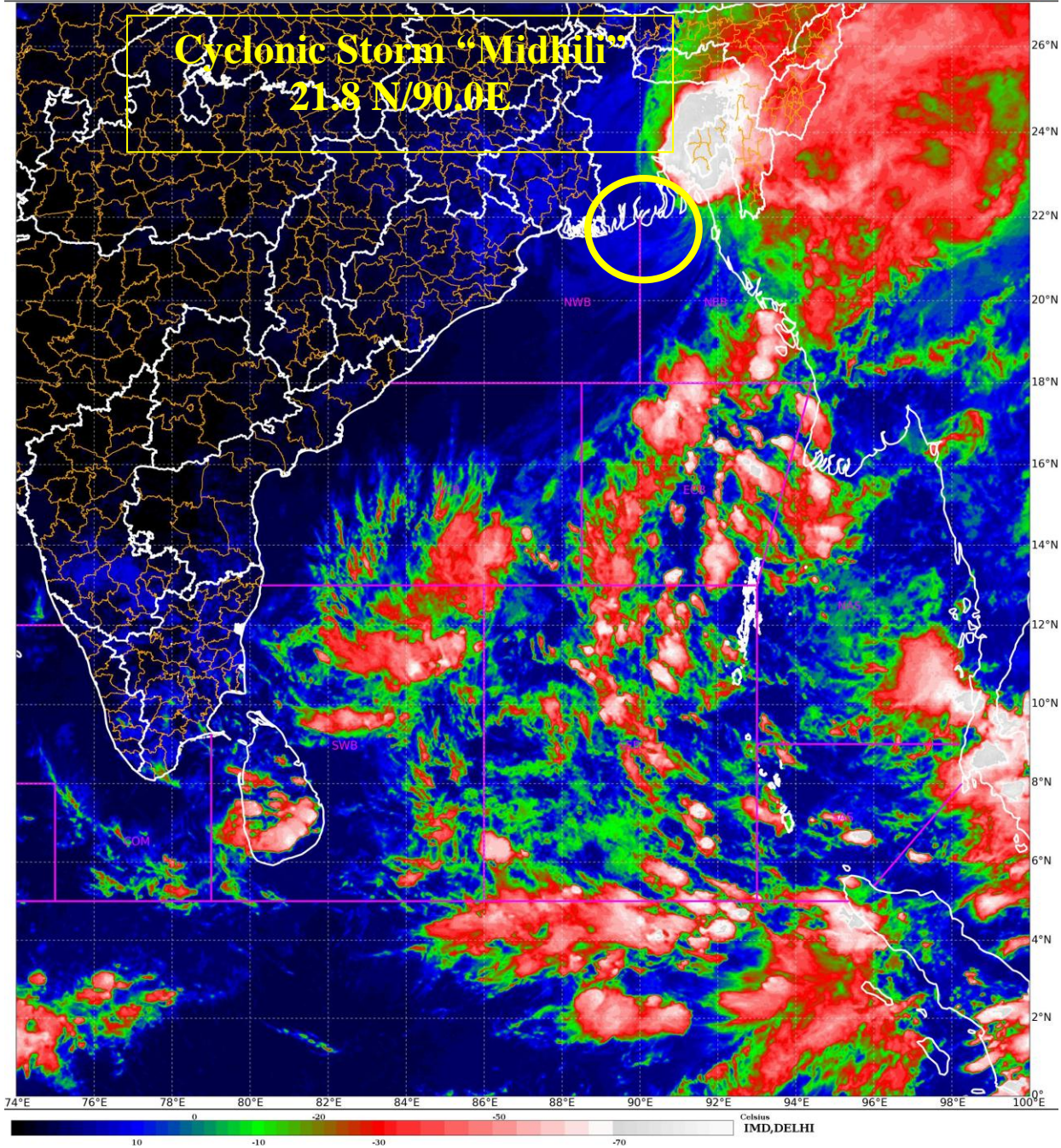
**STORM SURGE GUIDANCE:**

STORM SURGE OF ABOUT 1-2 METER HEIGHT ABOVE THE ASTRONOMICAL TIDE IS LIKELY TO CONTINUE TO INUNDATE LOW LYING AREAS OF COASTAL BANGLADESH DURING NEXT 3 HOURS.

**Remarks:**

LATEST OBSERVATIONS INDICATE THAT CYCLONIC STORM "MIDHILI" IS CROSSING BANGLADESH COAST CLOSE TO KEHPUPARA WITH WIND SPEED OF 65-75 GUSTING TO 85 KMPH. LANDFALL PROCESS WILL BE COMPLETED DURING NEXT 03 HOURS.

(KRISHNA MISHRA)  
SCIENTIST-C  
RSMC NEW DELHI

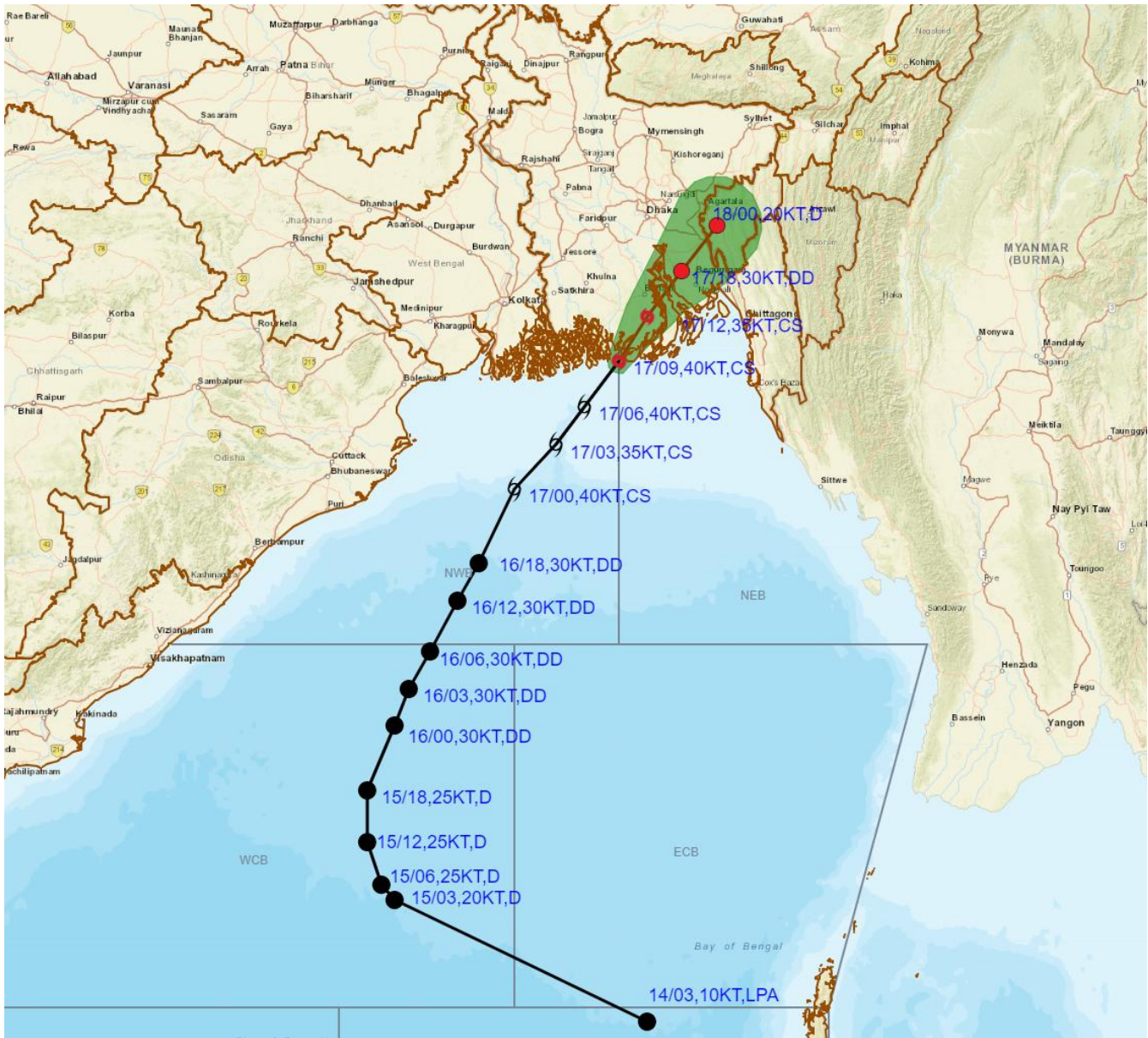


Cloud distribution: (a) Isolated: <25%, Scattered:25-50%, Broken: 51-75%, Solid:>75%, Convection Intensity: (a) Weak: Cloud Top Temperature (CTT) >-25°C, (b) Moderate: CTT: - 25°C to -40°C, (c) Intense: CTT: - 41°C to -70°C and (d) Very Intense: : Less than -70°C  
PROBABILITY OF CYCLOGENESIS (FORMATION OF DEPRESSION):NIL: 0%, LOW: 1-33%, , MODERATE: 34-66% AND HIGH: 67-100%

This is a guidance Bulletin for WMO/ESCAP Panel Member countries. Visit respective National websites for Country specific Bulletins



**OBSERVED AND FORECAST TRACK AND INTENSITY ALONGWITH CONE OF UNCERTAINTY IN ASSOCIATION WITH CYCLONIC STORM MIDHILI OVER NORTHEAST AND ADJOINING NORTHWEST BAY OF BENGAL CLOSE TO BANGLADESH COAST BASED ON 0900 UTC (1430 HRS IST) OF 17TH NOVEMBER 2023.**



**DATE/TIME IN UTC**

**IST=UTC + 0530**

**L: LOW PRESSURE AREA**

**WML: WELL MARKED LOW PRESSURE AREA**

**D: DEPRESSION (17-27 KT)**

**DD: DEEP DEPRESSION (28-33 KT)**

**CS: CYCLONIC STORM (34-47 KT)**

**SCS: SEVERE CYCLONIC STORM (48-63KT)**

**VSCS: VERY SEVERE CYCLONIC STORM (64-89 KT)**

**ESCS: EXTREMELY SEVERE CYCLONIC STORM (90-119 KT)**

**SuCS: SUPER CYCLONIC STORM ( $\geq 120$  KT)**

LESS THAN 34 KT

34-47 KT

$\geq 48$  KT

OBSERVED TRACK

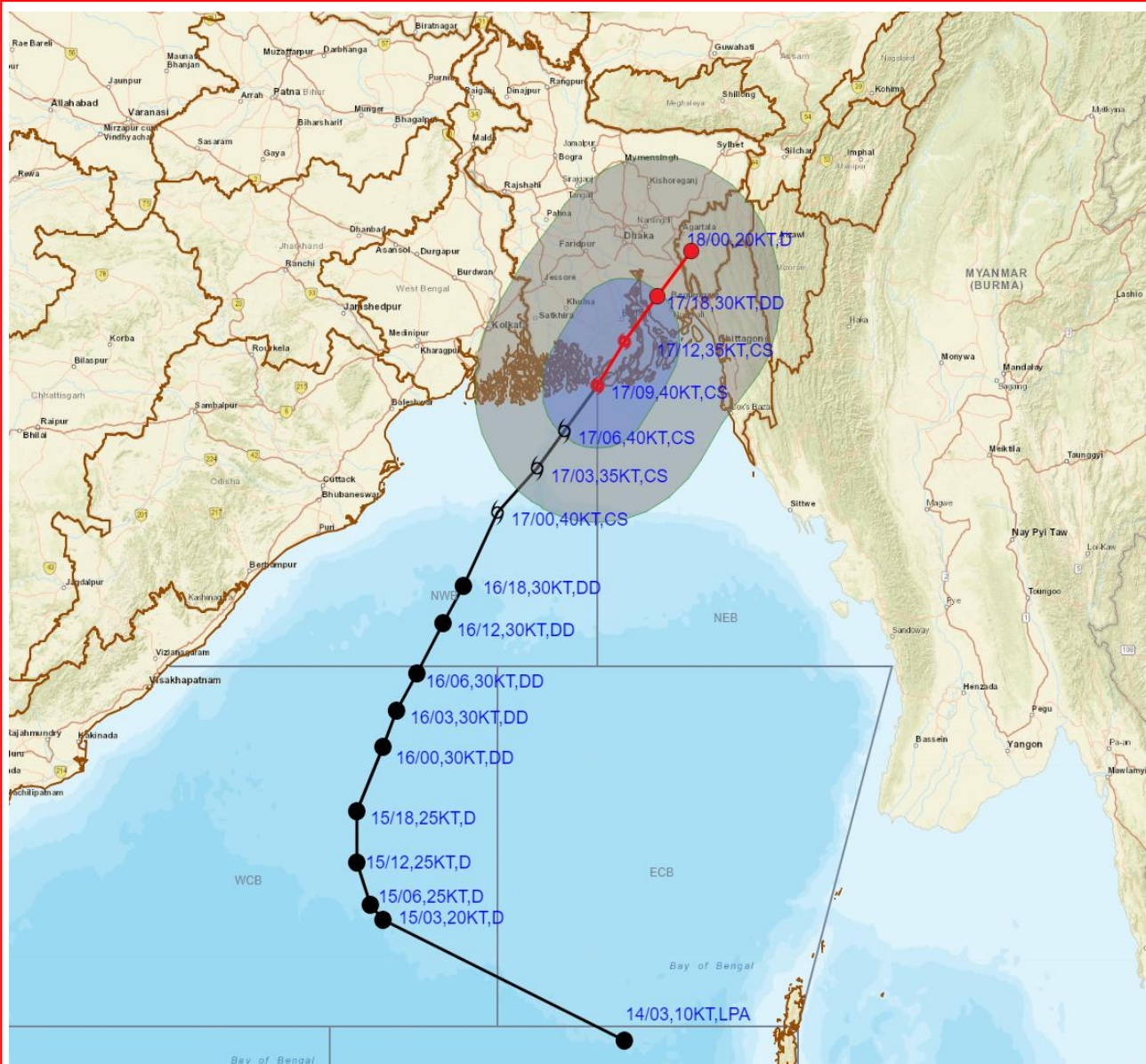
FORECAST TRACK

CONE OF UNCERTAINTY

Cloud distribution: (a) Isolated: <25%, Scattered:25-50%, Broken: 51-75%, Solid:>75%, Convection Intensity: (a) Weak: Cloud Top Temperature (CTT) >-25°C, (b) Moderate: CTT: - 25°C to -40°C, (c) Intense: CTT: - 41°C to -70°C and (d) Very Intense: : Less than -70°C  
**PROBABILITY OF CYCLOGENESIS (FORMATION OF DEPRESSION):NIL: 0%, LOW: 1-33%, , MODERATE: 34-66% AND HIGH: 67-100%**  
 This is a guidance Bulletin for WMO/ESCAP Panel Member countries. Visit respective National websites for Country specific Bulletins



**OBSERVED AND FORECAST TRACK AND INTENSITY ALONG WITH QUADRANT WIND DISTRIBUTION IN ASSOCIATION WITH CYCLONIC STORM MIDHILI OVER NORTHEAST AND ADJOINING NORTHWEST BAY OF BENGAL CLOSE TO BANGLADESH COAST BASED ON 0900 UTC (1430 HRS IST) OF 17TH NOVEMBER 2023.**



DATE/TIME IN UTC  
IST=UTC + 0530

L: LOW PRESSURE AREA

WML: WELL MARKED LOW PRESSURE AREA

D: DEPRESSION (17-27 KT)

DD: DEEP DEPRESSION (28-33 KT)

CS: CYCLONIC STORM (34-47 KT)

SCS: SEVERE CYCLONIC STORM (48-63KT)

VSCS: VERY SEVERE CYCLONIC STORM (64-89 KT)

ECS: EXTREMELY SEVERE CYCLONIC STORM (90-119 KT)

SuCS: SUPER CYCLONIC STORM ( $\geq 120$  KT)

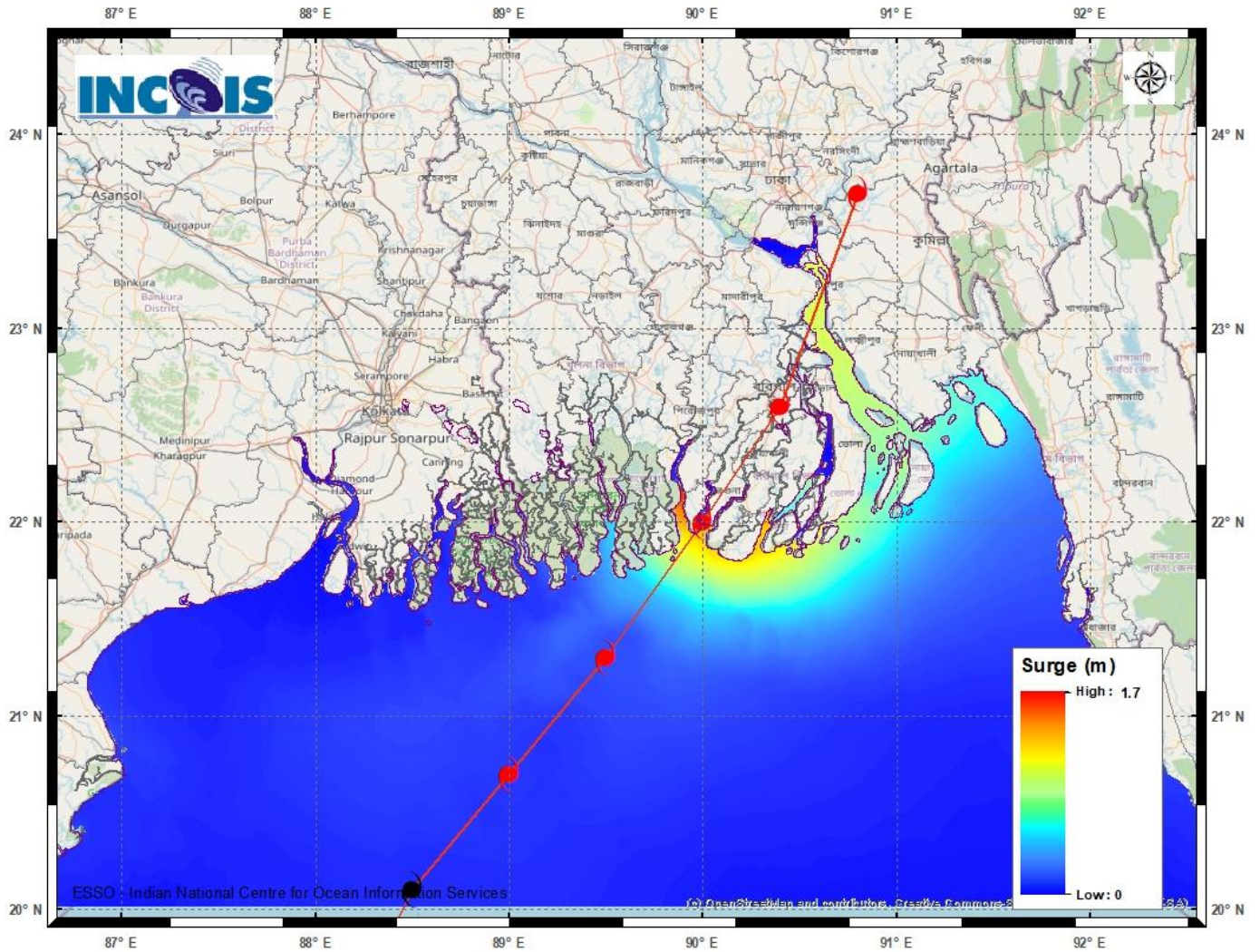
- LESS THAN 34 KT
- 34-47 KT
- $\geq 48$  KT
- OBSERVED TRACK
- FORECAST TRACK
- ▲ CONE OF UNCERTAINTY
- AREA OF MAXIMUM SUSTAINED WIND SPEED:
- 28-33 KT (52-61 KMPH)
- 34-49 KT (62-91 KMPH)
- 50-63 KT (92-117 KMPH)
- $\geq 64$  KT ( $\geq 118$  KMPH)

**IMPACT OVER THE SEA**

MSW (knot/kmph)	Impact	Action
28-33 (52-61)	Very rough seas	Total suspension of fishing operations
34-49 (62-91)	High to very high seas	Total suspension of fishing operations
50-63 (92-117)	Very high seas	Total suspension of fishing operations
$\geq 64$ ( $\geq 118$ )	Phenomenal	Total suspension of fishing operations

Cloud distribution: (a) Isolated: <25%, Scattered:25-50%, Broken: 51-75%, Solid:>75%, Convection Intensity: (a) Weak: Cloud Top Temperature (CTT) >-25°C, (b) Moderate: CTT: - 25°C to -40°C, (c) Intense: CTT: - 41°C to -70°C and (d) Very Intense: : Less than -70°C  
PROBABILITY OF CYCLOGENESIS (FORMATION OF DEPRESSION):NIL: 0%, LOW: 1-33%, , MODERATE: 34-66% AND HIGH: 67-100%  
This is a guidance Bulletin for WMO/ESCAP Panel Member countries. Visit respective National websites for Country specific Bulletins

## Storm Surge Guidance



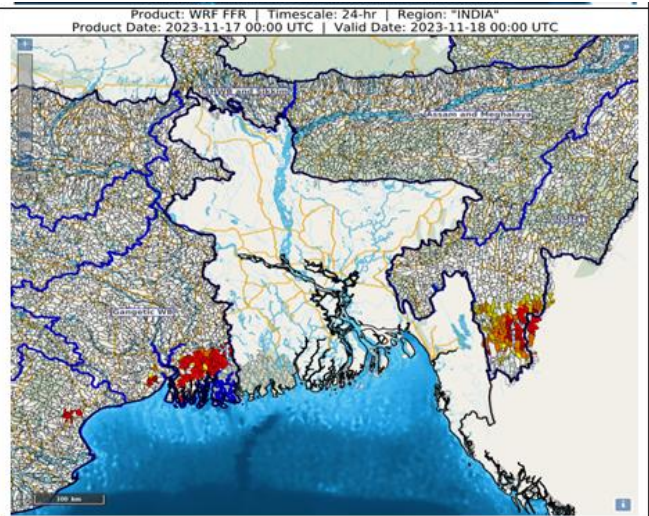
Cloud distribution: (a) Isolated: <25%, Scattered:25-50%, Broken: 51-75%, Solid:>75%, Convection Intensity: (a) Weak: Cloud Top Temperature (CTT) >-25°C, (b) Moderate: CTT: - 25°C to -40°C, (c) Intense: CTT: - 41°C to -70°C and (d) Very Intense: : Less than -70°C  
 PROBABILITY OF CYCLOGENESIS (FORMATION OF DEPRESSION):NIL: 0%, LOW: 1-33%, , MODERATE: 34-66% AND HIGH: 67-100%  
 This is a guidance Bulletin for WMO/ESCAP Panel Member countries. Visit respective National websites for Country specific Bulletins

# FLASH FLOOD GUIDANCE

## 24 hours Outlook for the Flash Flood Risk (FFR) till 0530 IST of 18-11-2023 :

Moderate flash flood risk likely over few watersheds & neighbourhoods of NMMT and Gangetic West Bengal Met Sub-divisions during next 24 hours.

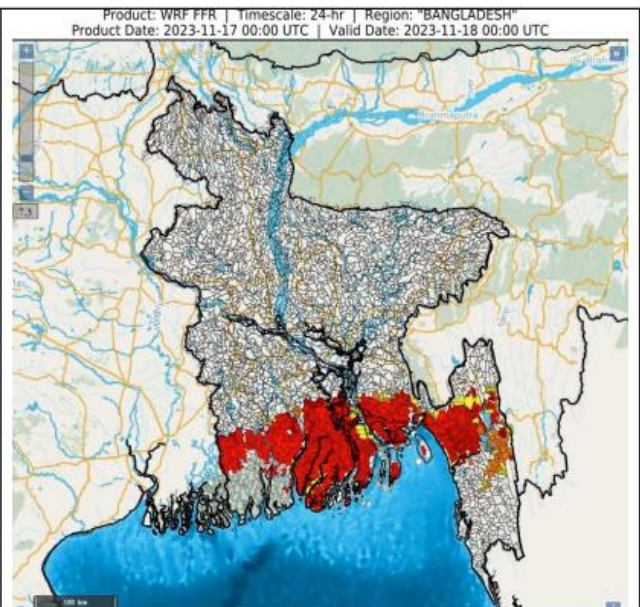
Surface runoff/ Inundation may occur at some fully saturated soils & low-lying areas over AoC as shown in map due to expected rainfall occurrence in next 24 hours.



## 24 hours Flash Flood Risk Outlook till 00 UTC of 18.11.2023:


Moderate flash flood risk likely over few watersheds & neighbourhoods of Southern parts of Bangladesh for next 24 hours.

Surface runoff/ Inundation may occur at some fully saturated soils & low-lying areas over AoC as shown in map due to expected rainfall occurrence in next 24 hours.



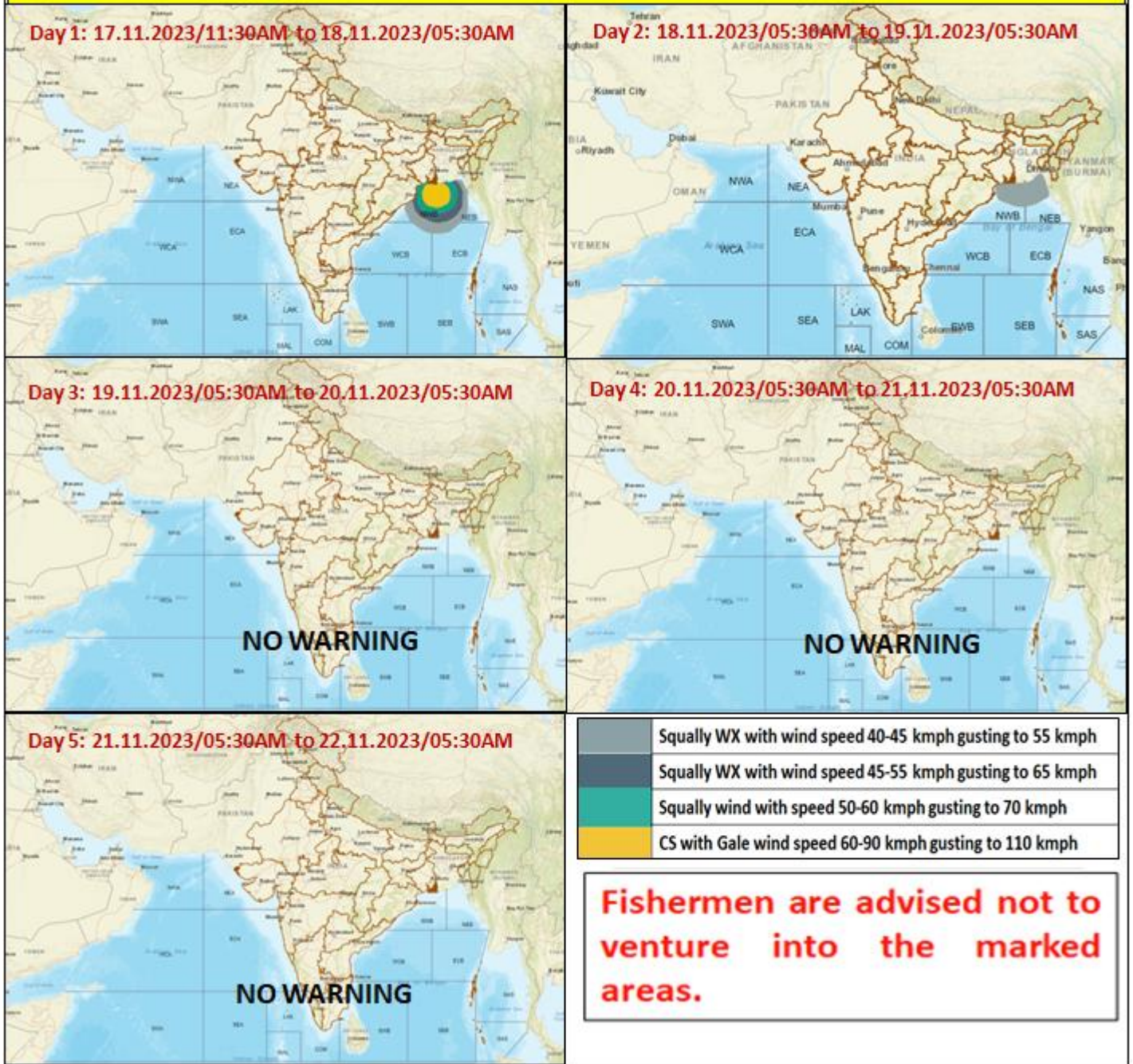
### Flash Flood Risk

 High Risk (Take Action)

 Moderate Risk (Be Prepared)

 Low Risk (Be Updated)

## Fishermen warning graphics



Cloud distribution: (a) Isolated: <25%, Scattered:25-50%, Broken: 51-75%, Solid:>75%, Convection Intensity: (a) Weak: Cloud Top Temperature (CTT) >-25°C, (b) Moderate: CTT: - 25°C to -40°C, (c) Intense: CTT: - 41°C to -70°C and (d) Very Intense: : Less than -70°C  
 PROBABILITY OF CYCLOGENESIS (FORMATION OF DEPRESSION):NIL: 0%, LOW: 1-33%, , MODERATE: 34-66% AND HIGH: 67-100%  
 This is a guidance Bulletin for WMO/ESCAP Panel Member countries. Visit respective National websites for Country specific Bulletins